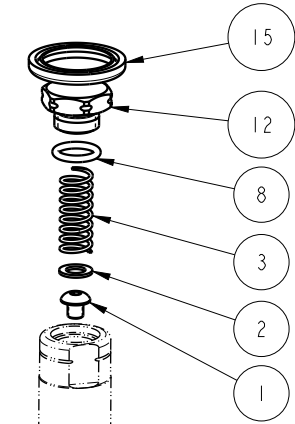
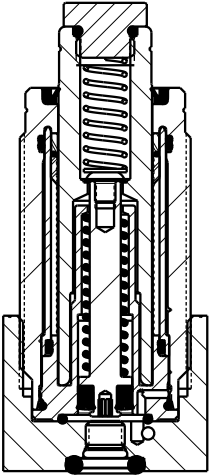




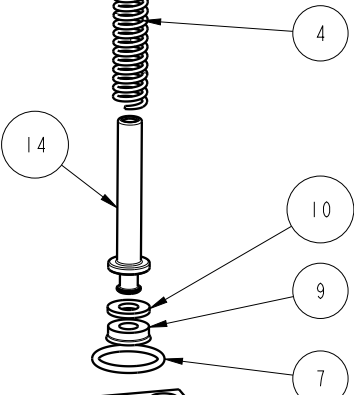
SEE IS1023 FOR SERVICE INSTRUCTIONS.  
LUBRICATE ALL SEALS WITH CLEAN  
HYDRAULIC OIL PRIOR TO ASSEMBLY.  
DO NOT USE SILICONE BASED LUBRICANTS.



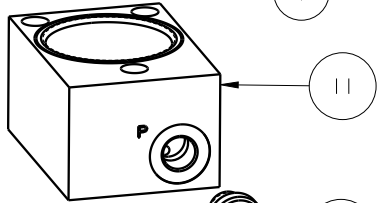
TORQUE TO  
1.25 Nm  
(11 IN-LB)

**PLUNGER**  
These work supports are fully rebuildable to full factory original capacity by any authorized Vektex repair facility. All seals can be replaced by any authorized repair facility.

**BODY ASSEMBLY**  
NOT REPLACEABLE  
TORQUE TO 67.8 Nm  
(50 FT-LB)



INSTALL LIP  
SIDE TOWARD  
BOTTOM OF PISTON



TORQUE TO  
2.7 Nm  
(24 IN-LB)

TORQUE TO  
6.8 Nm  
(60 IN-LB)

FOR MANIFOLD MOUNTING,  
REMOVE SAE 2 PLUG FROM  
BASE AND INSERT O-RING  
INTO COUNTERBORE

NO	QTY	PART NO	DESCRIPTION	STD SEAL KIT	SPRING KIT
1	1	21410075	BHCS, 8-32 x 3/16 SELFLOCK, SST		
2	1	21430001	WASHER		
3	1	23350083	SPRING, COMPRESSION		X
4	1	23355023	SPRING, COMPRESSION		X
5	1	30601123	PLUG, SOCH, SAE 2		
6	1	39000050	O-RING, (-204)	X	
7	1	39000061	O-RING, (-016)	X	
8	1	39002009	O-RING, (-012)	X	
9	1	39050028	SEAL, BEVEL, 3/16 X 7/16 X 1/8	X	
10	1	39054039	BU RING, (-201)	X	
11	1	41040805	BASE, WS, FA, 11&13.4KN		
12	1	41060802	BOLT, CONTACT, WS, 17.8kn		
13	1	43068004	PLUG, SOCH, G1/8		
14	1	81010815	PISTON, WS, FA, 3000 & 13.4KN, LS		
15	1	39V10023	WIPER, PRESS-IN, (3/4), VBGV	X	
N/A	N/A	60100131	KIT, SEAL, WS, FA, BM, HC, 17.8KN, 3 BOLT	NOTED	N/A
N/A	N/A	61100225	KIT, SPRING, WS, FA, HC, 4000, LS	N/A	NOTED
N/A	N/A	IS1023	INSTRUCTION SHEET	N/A	N/A

**PARTS LIST**



VEKTEK, INC.  
1334 E. SIXTH AVE. P.O. BOX 625  
EMPORIA, KS. 66801 U.S.A.

ASSEMBLIES AFFECTED  
41080816

**PARTS LIST, ASSY, WS, FA, CM, HC, 17.8KN, LS, 3 BOLT**  
DROP-IN REPLACEMENT FOR 41007013

SIZE  
A **MPL1072**

REV  
A

SHEET 1 OF 1

A	4631	RELEASE	RLK	2/28/22
REV	IN ACCORDANCE WITH ECN	EFFECTIVE DATE	REVISED BY	DATE
DRW BY:	RLK	<b>DRAWING STATUS: Released</b>		
DATE:	10/27/21	PRODUCTION APPROVED FOR RELEASED STATUS ONLY		